

# Pad Sites Available

Preston and Legacy  
Plano, Texas 75025



<b>Parcel</b>	<b>Size</b>	<b>Parcel</b>	<b>Size</b>	<b>Location:</b>	Preston and Legacy
Lot 2R:	2.387 Ac	Lot 6R:	1.876 Ac	<b>Zoning:</b>	0-2
Lot 3:	1.360 Ac	Lot 7R:	1.169 Ac	<b>Utilities:</b>	All Available
Lot 4:	1.146 Ac	Lot 8:	1.444 Ac	<b>Traffic:</b>	60,424—70,000 cars daily
Lot 5:	2.203 Ac	Lot 9:	3.112 Ac		

<b>Demographics</b>	<b>1-mile</b>	<b>3-mile</b>	<b>5-mile</b>
Population Estimate	9,902	79,755	214,026
% Population Growth	32.579%	29.455%	51.359%
Avg. H.H. Income	\$97,024	\$115,704	\$103,001

7800 Preston #132  
Plano, TX 75024  
Phone: 972-618-1047  
Fax: 972-421-1715  
www.AmeriStarCommercial.com

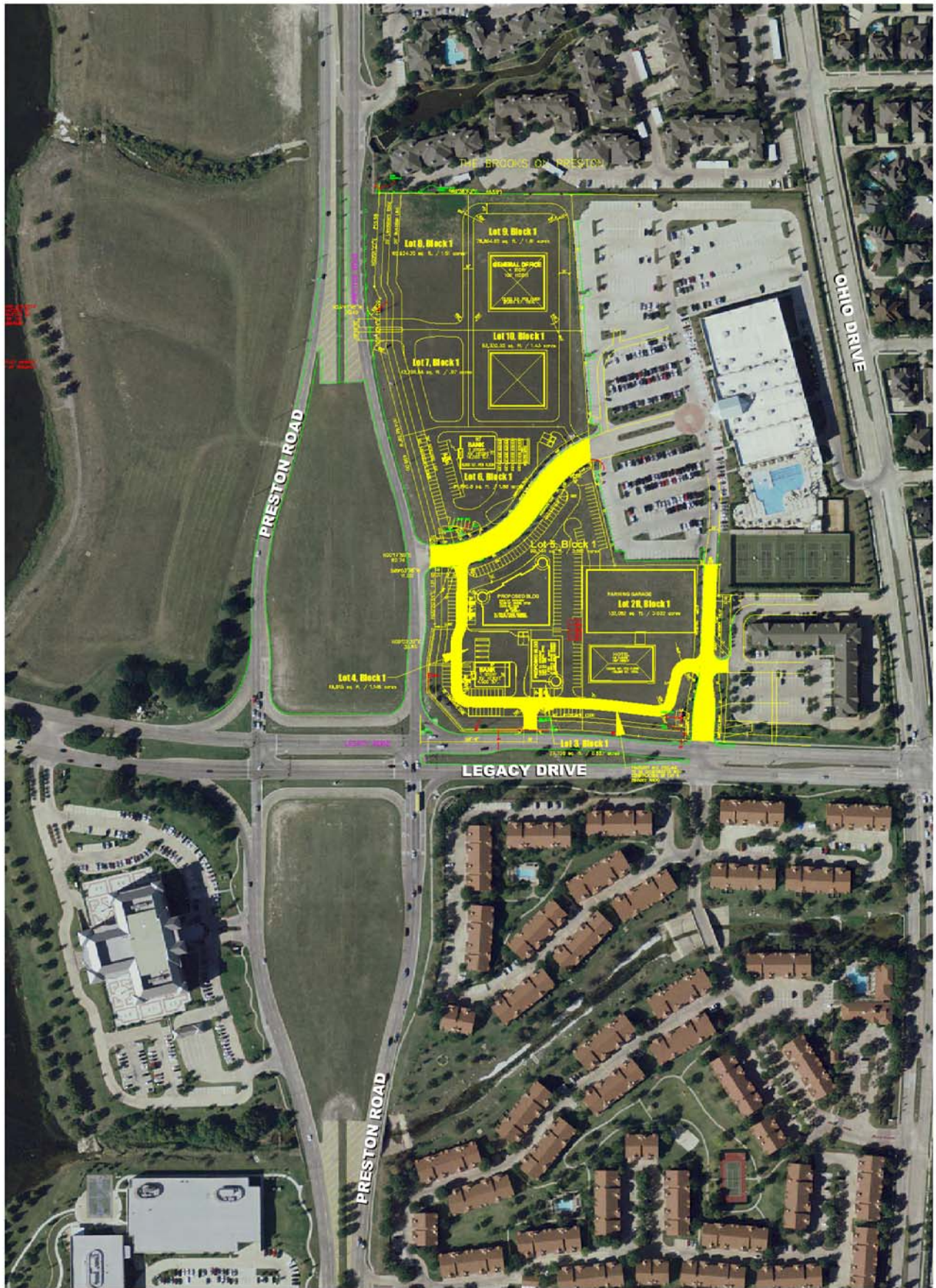


**Chet Wilke-Broker**  
Direct: 972-491-2438  
VM: 972-733-9560  
Fax: 972-690-7064  
Email: Chet@Wilke.net

This information is deemed reliable. We make no representations or warranties as to the accuracy of the seller information.

# Preston @ Legacy Plano, Texas





SCALE: 1" = 100'

This is a conceptual layout and does not necessarily depict the project, as it shall finally be developed. Aerial photography taken October 2006.

# PRESTON @ LEGACY

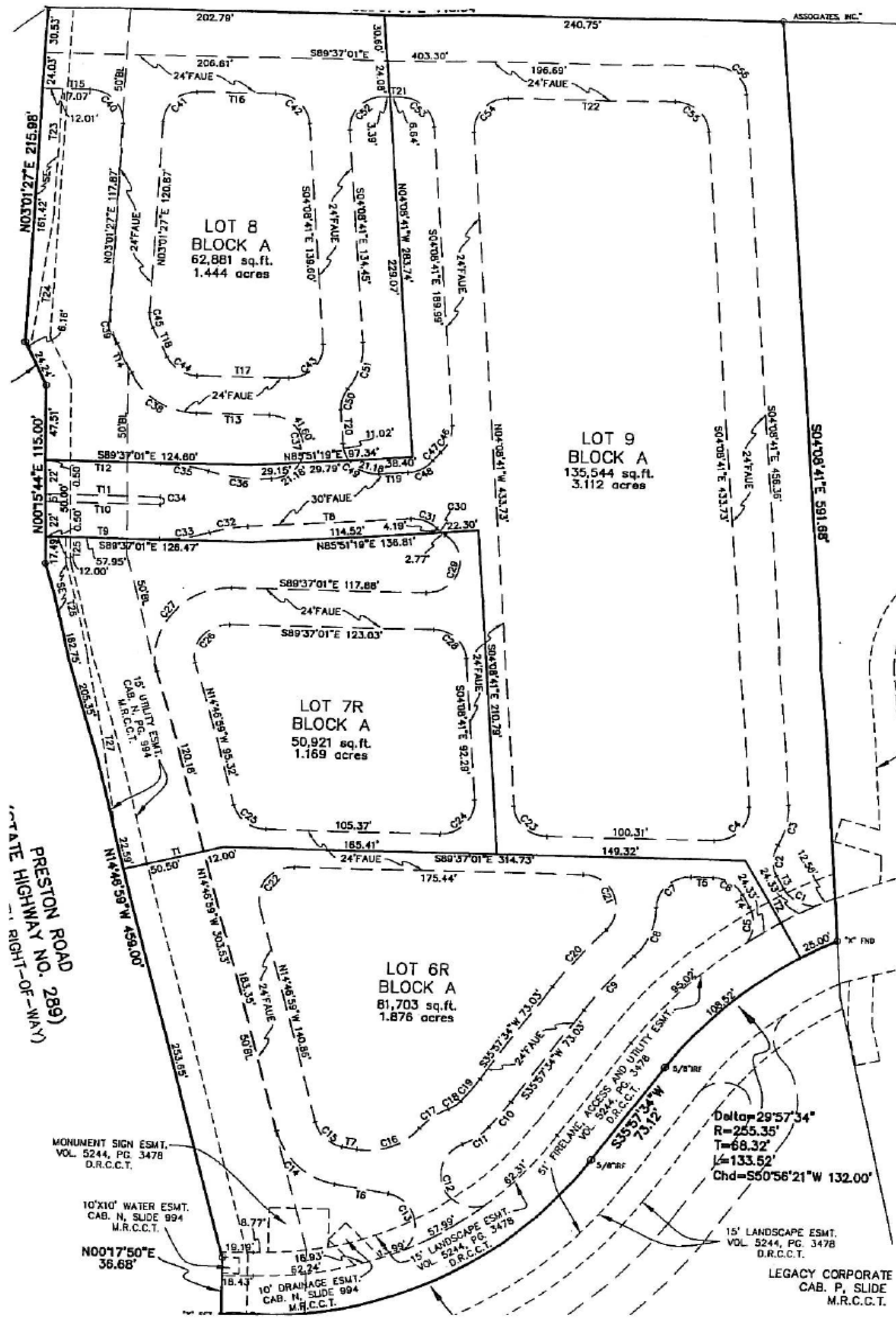
PLANO, TEXAS

ENGINEER/PLANNER

**DOWDEY, ANDERSON & ASSOCIATES, INC.**

5225 Village Creek Drive, Suite 200 Plano, Texas 75093  
Phone 972-911-0694 Fax 972-911-9538





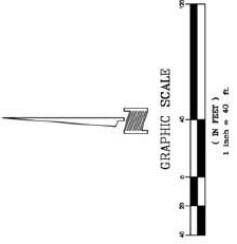
North Pad Sites  
**Preston @ Legacy**  
 Plano, Texas

PRESTON ROAD (289)  
 STATE HIGHWAY NO. 289  
 RIGHT-OF-WAY

ASSOCIATES, INC.



LOCATION MAP  
NOT TO SCALE



# South Pad Sites Preston @ Legacy Plano, Texas


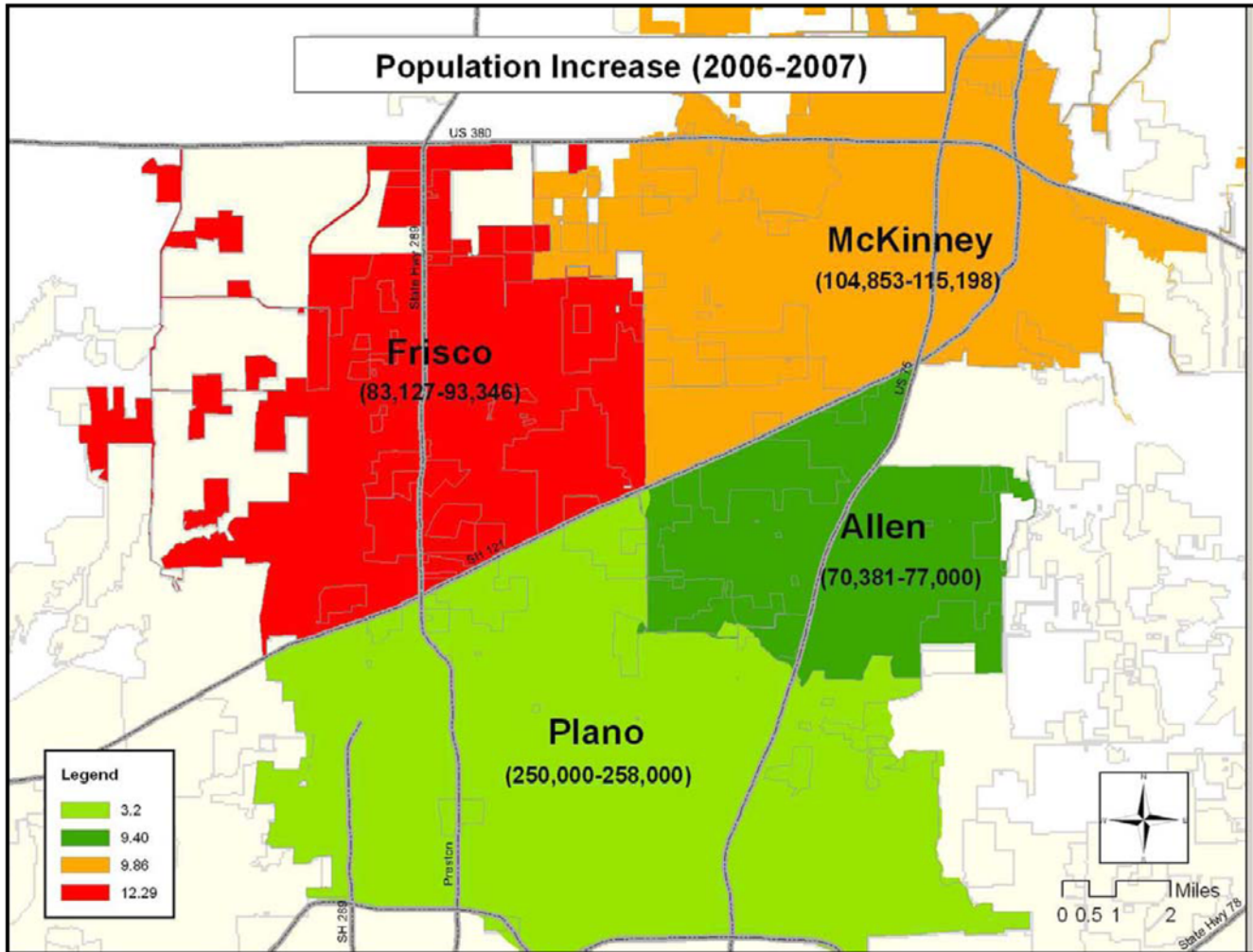
<b>PRESTON LEGACY CENTER</b>	
<b>SITE STUDY</b>	
CITY OF PLANO	
COLIN COUNTY, TEXAS	
 <b>DOMDY, ANDERSON &amp; ASSOCIATES, INC.</b> 2221 High Gate Drive, Suite 200    Plano, Texas 75085    972.937.0684	
DESIGN	DATE
DRAWN (CHECKED)	SCALE
AMB	7/13/07
AMB	1'-40"
97030	SHEET

PLATE NO.:





Note: Population estimates are for January of the calendar year

**POPULATION SUMMARY**

The map indicates population estimates for McKinney, Plano, Allen and Frisco. In 2006, McKinney added more new residents(10,345) than Plano(8,000), Allen(6,619) and Frisco(10,219). However, Frisco’s population grew at a higher rate (12.29%) than McKinney(9.86%), Allen (9.4%) and Plano(3.2%) compared to the previous year.

City	2006	2007	Increase	% Increase
Plano	250,000	258,000	8,000	3.2%
Allen	70,831	77,000	6,619	9.40%
McKinney	104,853	115,198	10,345	9.86%
Frisco	83,127	93,346	10,219	12.29%

Source: City of Allen, City of Frisco, City of Plano and City of McKinney